

U.  
S.  
A.  
AIR  
MAIL

# AIR POST STAMPS

1918



1923



1926-27



1927

LINDBERGH



1928



1930

Flat Plate Printing: Perforated 11







1933

CENTURY OF PROGRESS



1938



1939

TRANS-ATLANTIC



1935-37

TRANS-PACIFIC



1941-44



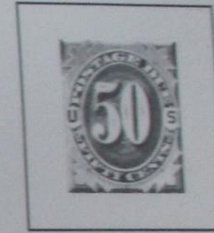
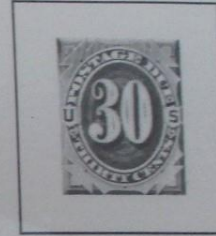
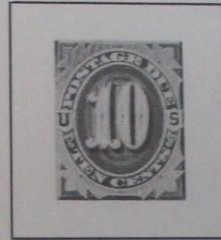
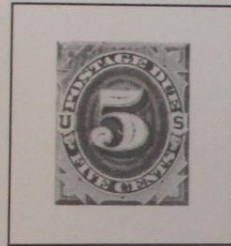
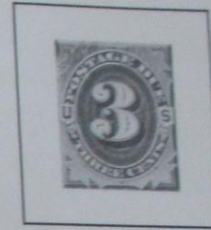
Airplanes themselves are the most interesting feature of these stamps.

# UNITED STATES

## POSTAGE DUE STAMPS

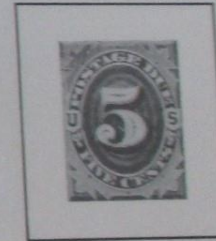
1879

Color: Brown



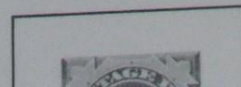
1887-89

Color: Red Brown



1891-93

Color: Bright Claret





No. 172

Erie, Pa.,

Clark & Goodwin, Bankers,

Pay to

or Bearer,

*Fifty*

\$50.00

*James H. 1870*

*J. Clark & Co.*

Scott R29  
Catalogue: 497.00

4 in 130 5.00

# UNITED STATES

REVENUE STAMPS  
1862-71





# UNITED STATES

REVENUE STAMPS

1862-71









Sometimes  
stamp again  
a "watermark"



Mr. R. Barron  
2901 Shennond Park Ave  
Eric, Pa.





Scot # 10c  
11 00



Some people resorted to the crafty practice of erasing the cancellation marks on stamps and re-using them. In an unsuccessful effort to stop this procedure the Government impressed into the paper on a small quantity of the 1861-66 issues tiny pyramidal designs, called "grills." Since there were many types of grills, a collection of "stamps with grills" is an interesting but very expensive philatelic specialty.

1869



BENJAMIN FRANKLIN



PONY EXPRESS RIDER



EARLY LOCOMOTIVE



GEORGE WASHINGTON



SHIELD AND EAGLE



S.S. "ADRIATIC"

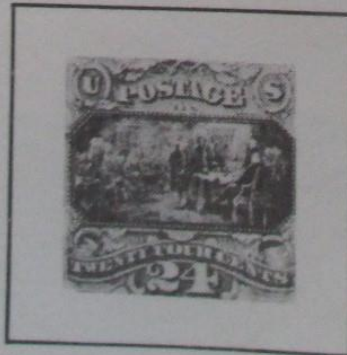


TYPE I

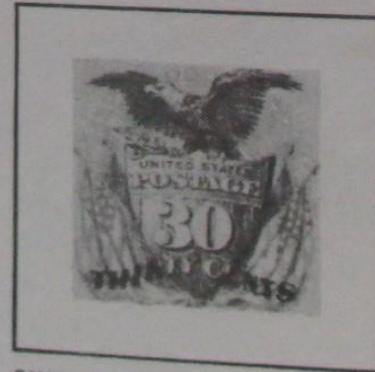
LANDING OF COLUMBUS



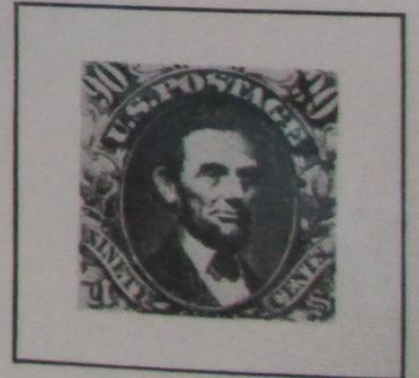
LANDING OF COLUMBUS



DECLARATION OF INDEPENDENCE



SHIELD, EAGLE AND FLAGS



ABRAHAM LINCOLN

Because of their odd size and the fact that they were





63-4.50



#65



354



69  
8.50

65\*  
9.00 →

68

TEAR



DC mail  
637  
W

(60)

(61)

(62)

#70

#71

Second Issue



3 C  
LAKE

(66)



(67)



(69)



(70)



(72)

#63

1862-66

#71



(73)



5 C  
RED BROWN

(75)

5 C  
BROWN

(76)



#70

(32B)

(32D)



(34)



(35)



10 C  
GREEN  
Type IV

(36C)



\*3400